

# Review

## CP Geometry

8.1-8.4

find the geometric mean between: ② Simplify

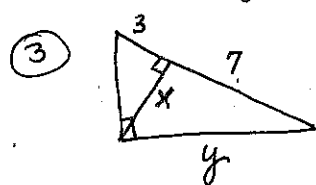
a)  $4 \div 10$

b)  $7 \div 4$

a)  $\frac{1}{\sqrt{2}}$

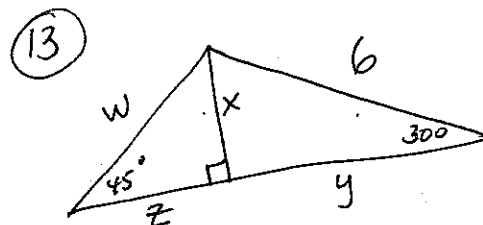
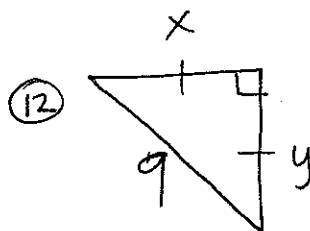
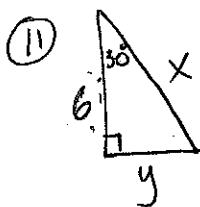
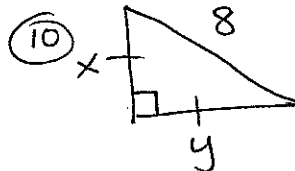
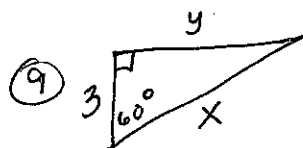
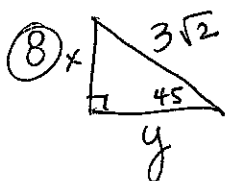
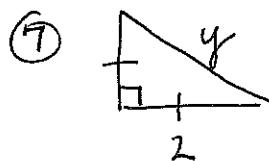
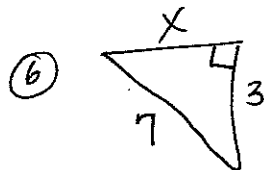
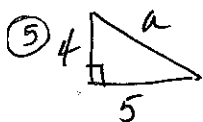
b)  $\sqrt{\frac{7}{12}}$

Find  $x \div y$



④ Does  $14, 21 \div 29$  as sides of a  $\Delta$  form a Right  $\Delta$ ?

Find the missing sides.



Find each ratio:

$\sin w =$

$\cos x =$

$\tan w =$

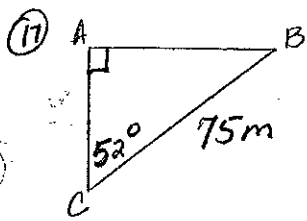
⑮  $\frac{4}{5}$ ,  $\angle x$  - which trig ratio will correspond?

⑯  $\cos 17^\circ =$

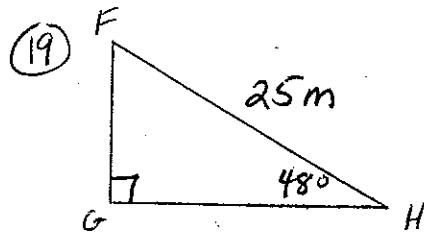
$\tan 84^\circ =$

$\sin x = .4531$

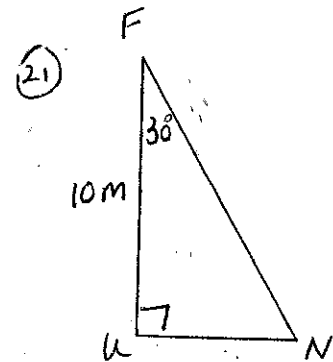
$\cos = .7071$



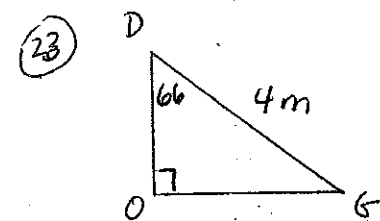
$$b =$$



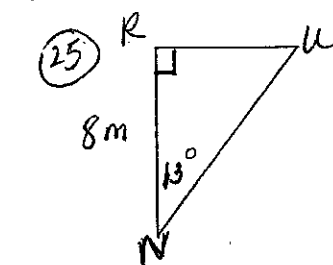
$$f =$$



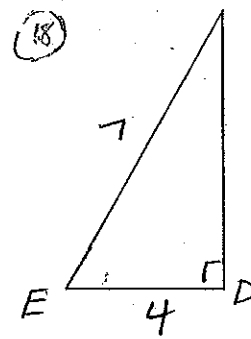
$$u =$$



$$d =$$

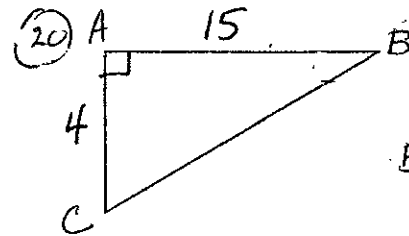


$$n =$$

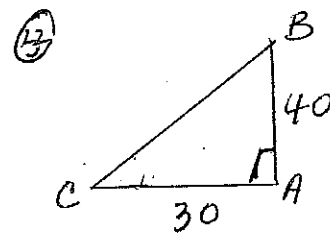


measure of the lettered angle.

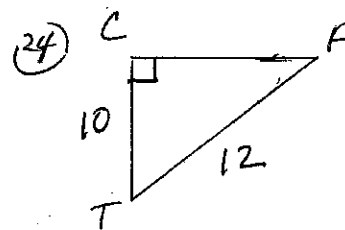
$$E =$$



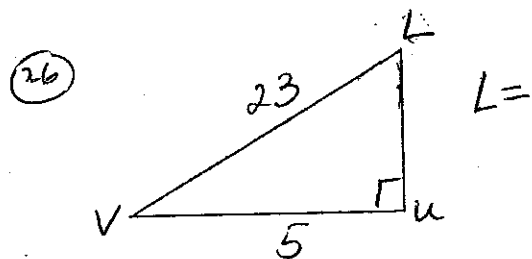
$$B =$$



$$C =$$



$$A =$$



$$L =$$

27) A 10' ladder leans against a building. If the angle that is formed with the ground is  $23^\circ$ , what is the distance from the top of the ladder and the ground?